

# CERTIFICATE OF LOCATION OF GOVERNMENT CORNER

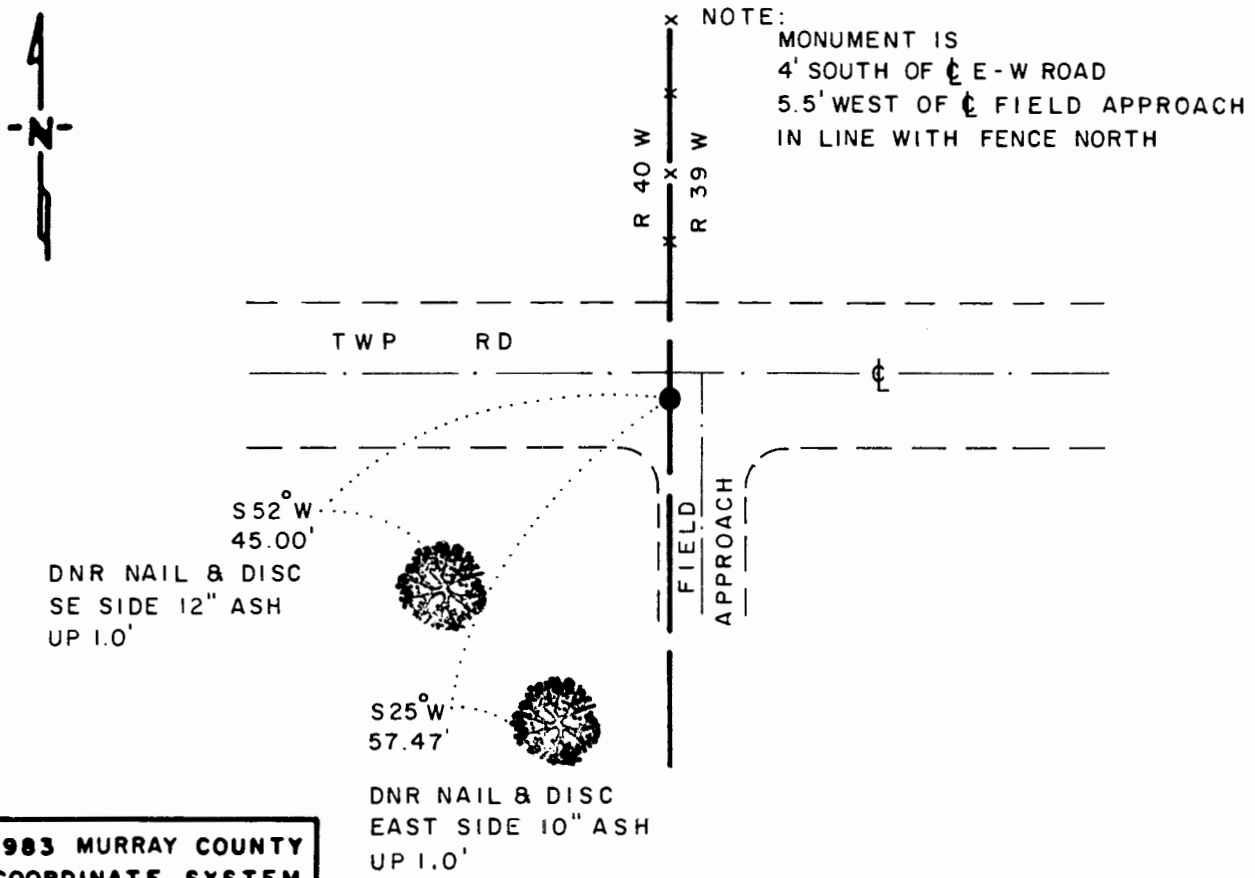
NORTHEAST Corner of Section 12, Township 107 N, Range 40 W, 5<sup>th</sup> P.M.

STATE OF MINNESOTA, County of MURRAY

At the corner location shown on the sketch

- On 5-14-91 found a 2 1/2" x 24" CHARRED POINTED WOOD STAKE,  
DATE DOWN 2.5'
  - left monument as found,  lowered monument,  removed monument (explain)
- On 5-14-91 placed a 3/4" x 24" REBAR WITH ALUMINUM CAP STAMPED  
DATE "DNR SURVEY MARKER" OVER WOOD STAKE, DOWN 0.5'

### SKETCH OF REFERENCE TIES



**1983 MURRAY COUNTY  
 COORDINATE SYSTEM**  
 N = 189,852.625  
 E = 548,368.493

**BEARINGS OBSERVED WITH COMPASS**

Statement of evidence relative to this corner location is on back of page

J.B.M. 6-25-91  
 WAS-01346

I hereby certify that this document and the data contained herein was prepared by me or under my direct supervision.

Bruce W. Shipped 8-12-91  
SIGNATURE DATE

Registration No. 17003  
 Land Surveyor,  Professional Engineer  
 County Surveyor,  County Engineer

**OFFICE OF THE COUNTY RECORDER**  
 County of MURRAY

I hereby certify that this document was filed in the Co. Recorders office at \_\_\_\_\_ M. on the \_\_\_\_\_ day of AUG 15 1991 A.D., 19 \_\_\_\_\_

County Recorder James V. Johnson  
 By \_\_\_\_\_, Deputy

DOCUMENT NO. \_\_\_\_\_